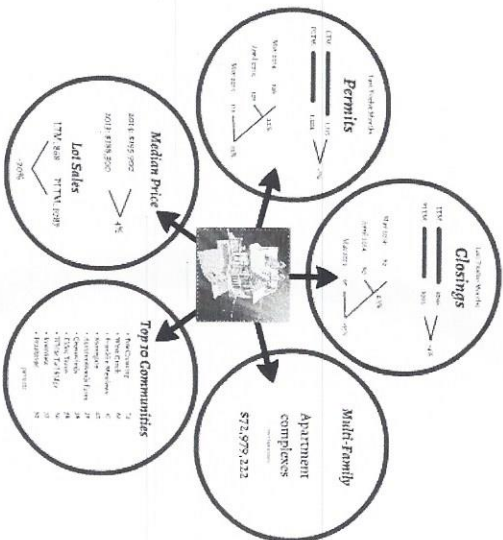
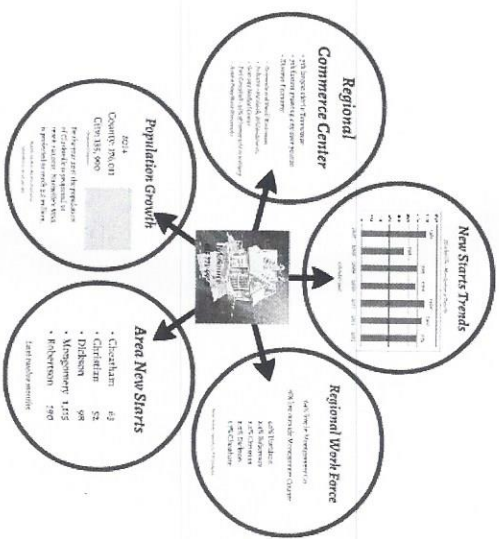
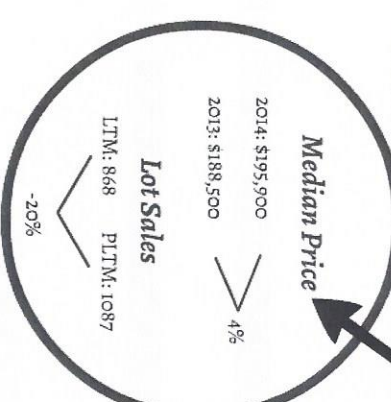
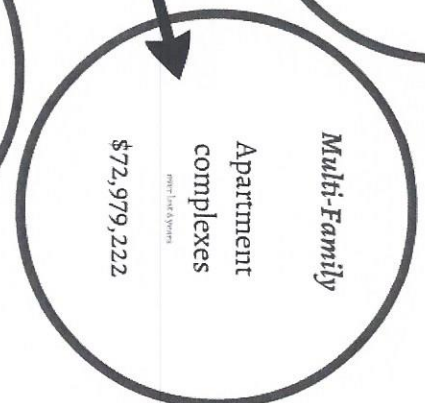
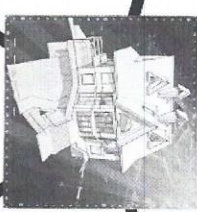
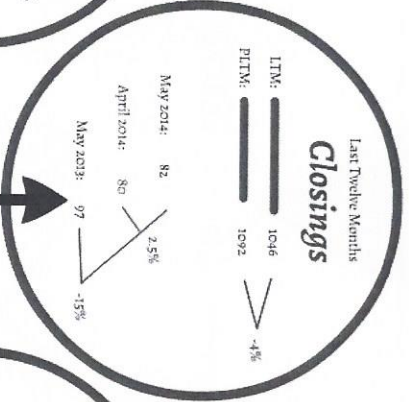
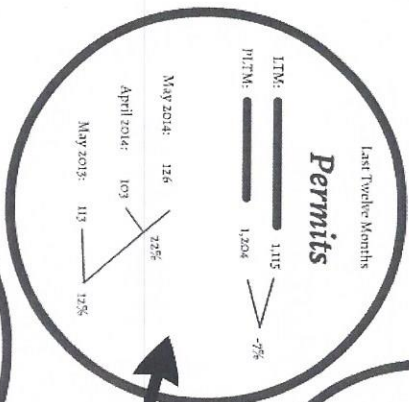


# Montgomery County



Montgomery Co.  
 New Starts  
 by  
 The Numbers  
  
 InfoSource  
 Brian Lascie  
 12 June 2014





### Top 10 Communities

• Fox Crossing	72
• West Creek	66
• Franklin Meadows	47
• Stonegate	40
• Autumnwoods Farm	38
• Crosswinds	38
• Eldos Trace	38
• White Tail Ridge	36
• Rossvie	35
• Peachtree	30

permits

# Montgomery County



Last Twelve Months

# Permits

LTM:



1,115

PLTM:



1,204

-7%

May 2014:

126

April 2014:

103

May 2013:

113

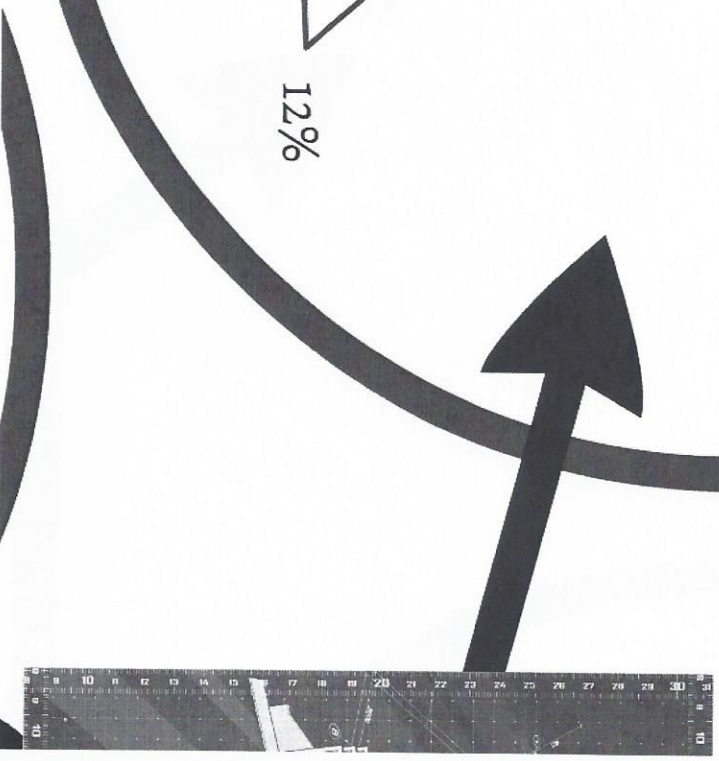
22%

12%

May 201

April 2

1



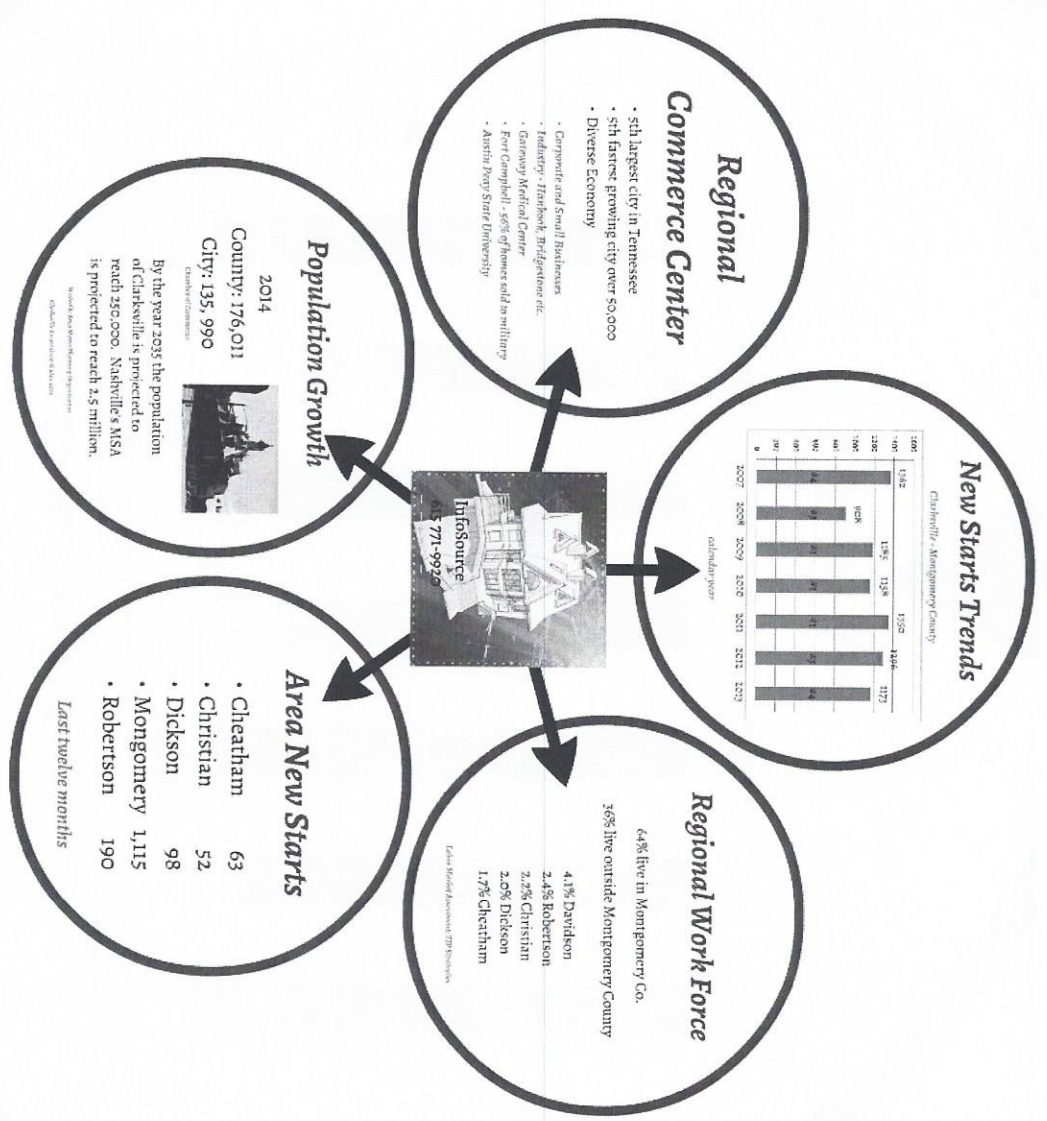


# Top 10 Communities

- Fox Crossing 72
- West Creek 66
- Franklin Meadows 47
- Stonegate 40
- Autumnwoods Farm 38
- Crosswinds 38
- Eldos Trace 38
- White Tail Ridge 36
- Rossvieiw 35
- Peachtree 30

*permits*







# *Area New Starts*

- Cheatham 63
- Christian 52
- Dickson 98
- Montgomery 1,115
- Robertson 190

*Last twelve months*



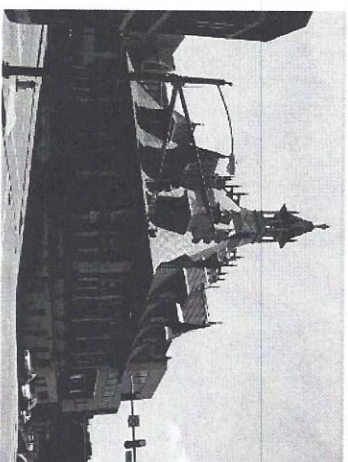
# Population Growth

2014

County: 176,011

City: 135,990

Chamber of Commerce



By the year 2035 the population of Clarksville is projected to reach 250,000. Nashville's MSA is projected to reach 2.5 million.

Nashville Area Metro Planning Organisation.

Clarksville Smart Growth plan 2030





**InfoSource**  
**615 771-9920**

